

# 2300 EX



[www.ommelift.dk](http://www.ommelift.dk)

## ARTICULATED PLATFORM MOUNTED ON TRAILER

Omme Lift dealer in Czech Republic:

 **STATECH**

**Statech s.r.o.**

Počapelská 346  
27701 Dolní Beřkovice Czech Republic

Phone +420 315 692 222

Fax +420 315 601 373

E-mail [info@statech.cz](mailto:info@statech.cz)

Website [www.statech.cz](http://www.statech.cz)

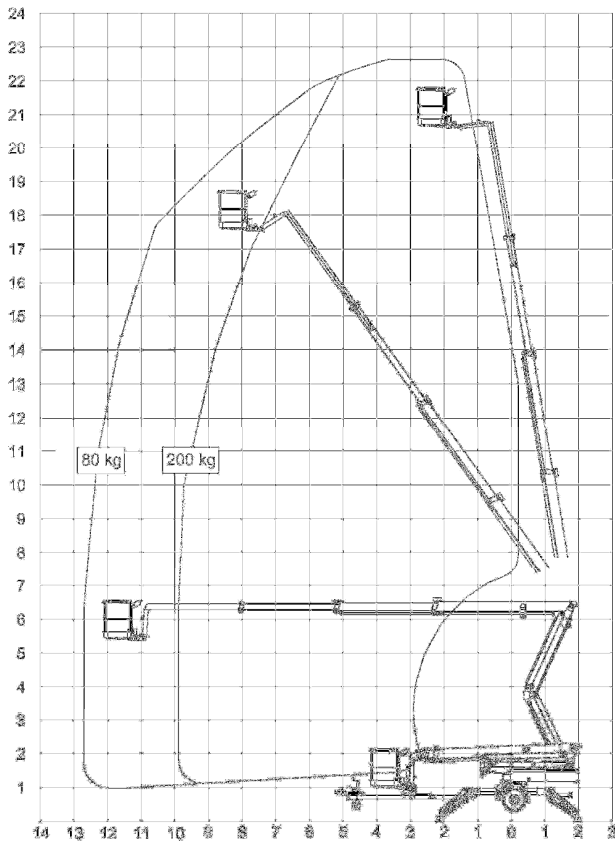
**OMMELIFT**



Quality since 1906

# 2300 EX

## Mounted on trailer



Technical data:	2300 EX	2300 EXB
Max. working height	22.60 m	
Max. outreach	12.70 m	
Max. basket load	200 kg	
Basket size	1.25x0.8x1.1m	
Turnable basket	± 41°	
Rotation	± 400°	
Power supply	230V/16A	24V/200Ah/5h
Charger		24 V/30 A
Transport length	7.32 m	
Transport height	1.99 m	
Transport width	1.70 m	
Operational width	4.21 m	
Total weight	3150 kg	3150 kg
Controls	Proportional	
Hydraulic stabilizers	+	
Hydraulic propulsion	+	
230 V outlet in basket	+	

+ Standard

## LARGE GROUND CLEARANCE



Turnable basket



Propulsion



Large outreach



Easy control

- 2300 EX is powered by an electric motor, connected to 230 V mains and is especially suitable where continuous operation is required. 2300 EXB is powered by a heavy duty battery pack, in total 24V/200 Ah/5h. Operation is possible independently of 230 V mains connection.
- The low centre of gravity provides a secure transport after the towing vehicle.
- The 2300 EX platforms are mounted with hydraulic propulsion, turnable basket and hydraulic stabilizers. When equipped with hydraulic propulsion the platform can propel itself around the work site. Operation from a special platform, giving a complete overview. The turnable basket makes it possible for 2 persons to operate parallel with e.g. a facade.
- The 2300 EX platforms are equipped with an unfolding scissor system, giving the lift an increased up and over outreach over high obstacles. When operating the scissor system up and down the basket will follow a vertical line. Furthermore the lift has no tail swing at rotation. Electric wiring to the basket is protected inside the telescopic boom. The telescopic cylinder is protected under the boom.
- The 2300 EX platforms are fitted with straightforward control, in the basket and at ground level. The hydraulic levers for the stabilizers are placed centrally on the chassis. The proportional controls ensure steady and smooth movements.